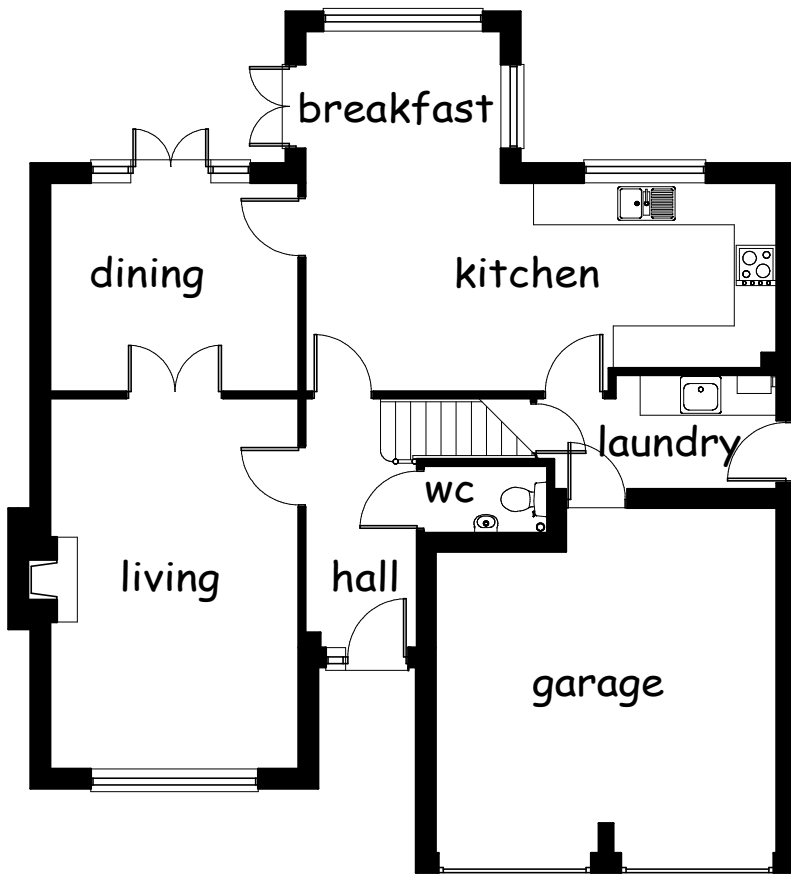


House Type Lady Hay 2009



GROUND FLOOR

Living Room

18'0" x 12'0" (5475 x 3650mm)

Dining Room

12'0" x 10'1" (3650 x 3075mm)

Kitchen

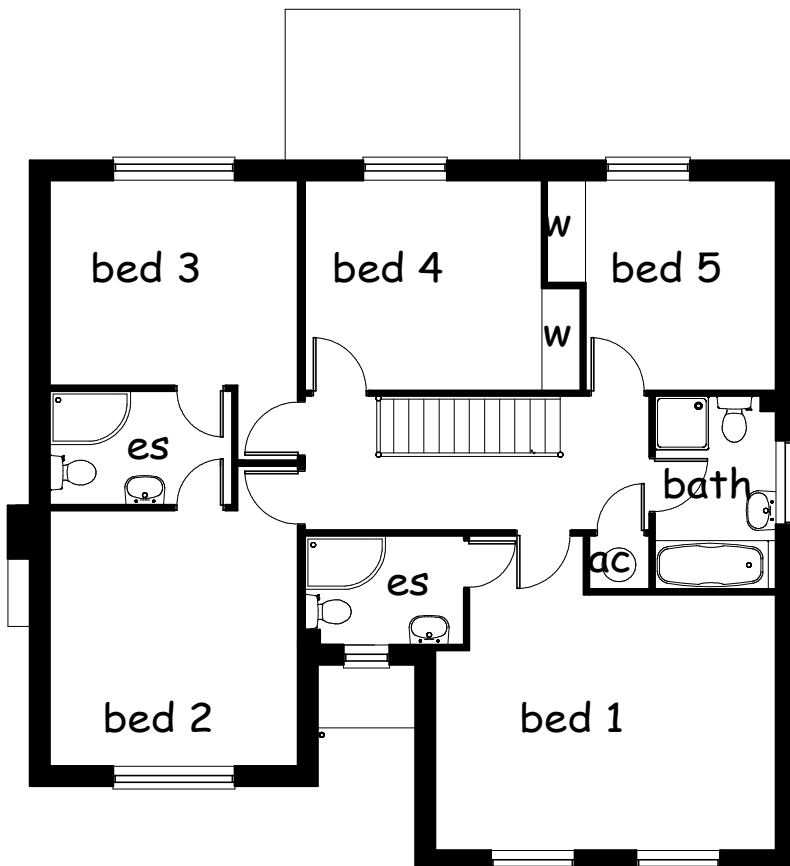
22'10" x 10'1" (6975 x 3075mm)

Breakfast

9'5" x 7'4" (2875 x 2225)

Laundry

7'9" x 5'6" (2375 x 1675)



FIRST FLOOR

Bedroom 1

16'6" x 12'5" (5025 x 3775mm)

Bedroom 2

12'5" x 12'0" (3775 x 3650mm)

Bedroom 3

12'0" x 9'11" (3650 x 3025mm)

Bedroom 4

11'5" x 10'2" (3500 x 3100mm)

Bedroom 5

10'2" x 9'3" (3100 x 2800mm)